

Island's 'First' Solar Strata



*Bruce Mackenzie,
Strata Past President*

Central Park Strata – Pembroke & Quadra

1977

64 Units

4 storey

Wood frame

Low income



Why on Central Park ?

- Big flat roof
- NO shade
- BC Hydro Residential Two Step Conservation Rate - \$0.13/kwh



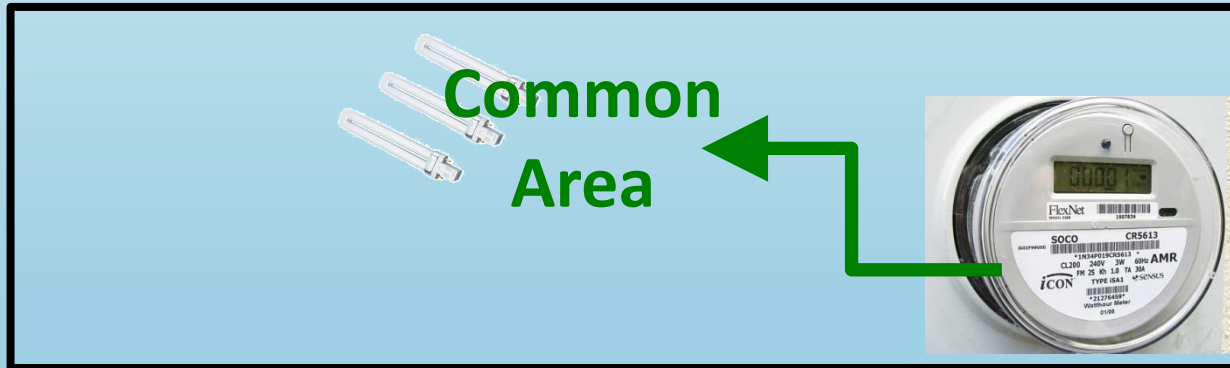
Ballasted System
– rare in BC

No holes in roof !

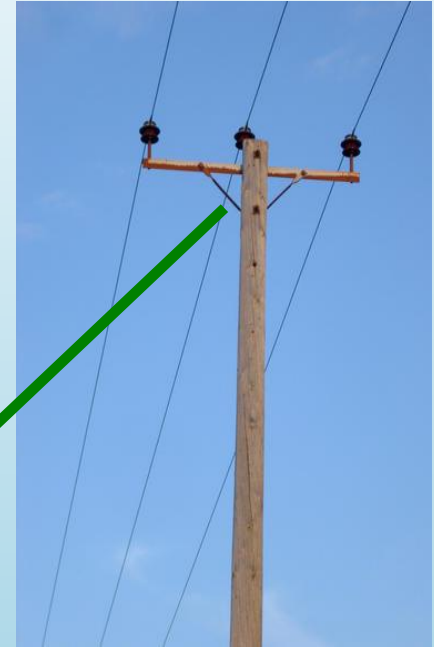


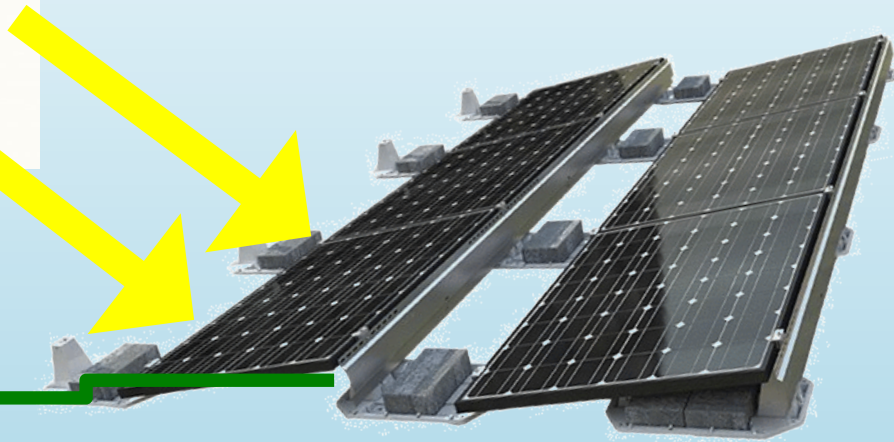
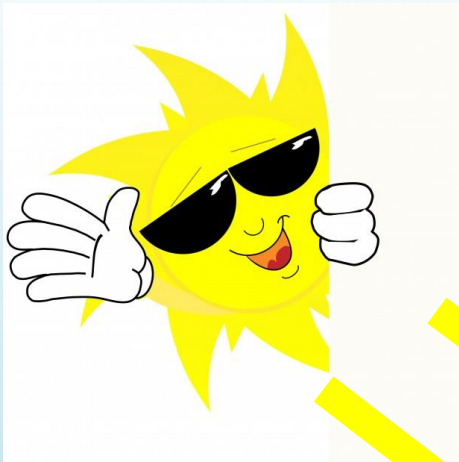
Common areas, not suites:

- Hallway lights
- Outdoor lights
- Ventilation fans
- Washing machines
- Baseboard heat (rarely)



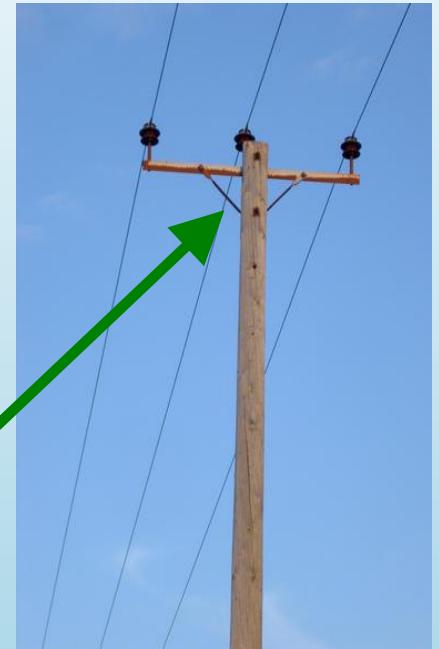
Meter





Inverter

Meter



The Numbers:

- Grid-tied / Net-metered
- 60 panels (14.7 kw)
- 16,000 kwh / year
- Powers common areas ($\sim 1/3$)
- \$2,200 projected power savings in 2016
- \$47,000 system cost – average \$750 per suite
- 4.6% Return On Investment (ROI)

Single Family



- \$5,000 - \$10,000
- Paid up front or financed

Strata



- \$735 per owner
- Paid over 5 years